

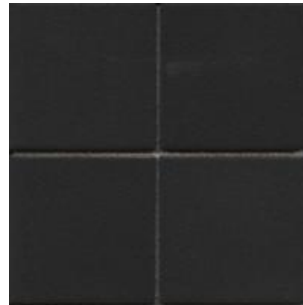
SPK Series



White
SPK003



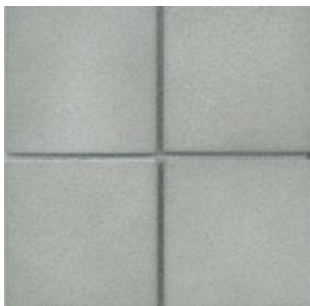
Ivory
SPK006



Black
SPK009



Sand
SPK012



Mid Grey
SPK041



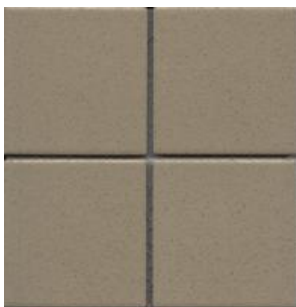
Light Grey
SPK042



Light Ash
SPK043



Bluegum
SPK044



Light Latte
SPK060



Dark Latte
SPK062

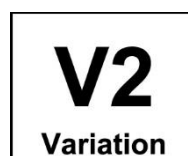


Mocha
SPK064



Mint Green
SPK135

- **Sizes** 97x97 mm Sheeted Mosaics
- **Product Type** Glazed Mosaics



GNS Ceramics recommends that our retail shops pass on the following information to the installer and end-user.

Ceramic tiles are only one component of a much larger building system. It is our experience that failure of any tiling system is very often the result of a combination of factors. For example; inappropriate design, type of substrate, surface preparation, temperature during installation, adhesives, incompatibility of products, product failure, environmental factors skill and knowledge of the installers etc; the latter being supplied or controlled by a variety of manufacturers and tradesmen. GNS Ceramics has no involvement in the design, selling and installation processes and once goods have been dispatched from our warehouse we have no control over where and how these products are used. As a result the project manager, and or the tiler are the only people in a position to ensure that all the components used in a project are compatible and that the product is installed in accordance with the Australian Building Code and the Australian Standards.

Installation Instructions for all types of tiles can be found in the GNS Ceramics Price List, and on our website. We suggest these are followed at all times.

Cleaning and Maintenance

Do not use abrasive cleaners and chemicals which could permanently scratch and damage the surface of the tile. For daily cleaning we recommend the use of a mild PH Neutral detergent. Should a more vigorous cleaning programme be required we recommend the use of a proprietary tile cleaner from a specialty tile supplier.

Slip Resistance

The best way to minimise the risk of slipping is through safe design principals. This involves a risk management approach which evaluates the likelihood and consequence of an incident to occur. Slip resistive flooring is only one of the design components to consider, other design features should also be considered, including awnings, airlocks, matting and a suitable cleaning regime to reduce the extent of contaminates. Visual aids, warning signs, handrails and lighting, along with the footwear to be worn, should also be considered.

All ceramic tiles can be slippery, particularly when wet. This includes tiles, commonly used in wet areas such as bathrooms. It is important that customers be aware of the potential danger of wet ceramic tiles and seek advice from the retailer as to the level of slip-resistance of any particular tile, and its suitability for the intended application. If there is any doubt, tiles should be tested for slip-resistance immediately after being laid, under the conditions that they will be subject to during use. While tiles may achieve an acceptable standard in a laboratory test, it is quite probable that the performance in-situ will be less than expected, due to installation methods, wear & tear, cleaning regimes and unforeseen circumstances. Test results should therefore to be seen as a relative guide to estimate the merits of one tile versus another and should be used in conjunction with the Australian Building Code and the relevant Australian Standards. Further information on slip resistance is provided in the Australian Standards HB197:1999 - An Introductory guide to the slip resistance of pedestrian surface materials.

There are many factors beyond the control of the supplier that can affect the level of slip-resistance of tiles, or contribute to the incidents of injury through slipping. Consequently, the laboratory test results presented here must not be viewed to mean that GNS Ceramics Pty Ltd, is providing any warranty, nor will accept any liability for personal injury or accidents arising from the selection or installation of tiles under any circumstances.

Classes of Use

The classification has taken into account the recommendations of the Australian Standards; however, they are given for general guidance only. They are valid for the given application under **NORMAL CONDITIONS** and should not be taken to provide accurate product specifications for specific requirements.

WARNING: Other standards and building code requirements may affect your selection of tiles.

Consideration should be given to the footwear, type of pedestrian traffic and cleaning methods expected. Floors should be adequately protected against soiling from following trades during installation; they should also be protected against scratching dirt at the entrances to building by interposing footwear cleaning devices. For example, mats, shoe scrapers, static devices, etc.

CLASS 5 - Floor coverings that are subject to severe pedestrian traffic over sustained periods with some scratching dirt, so that the conditions are the most severe for which tiles may be suitable; For example, shop, foyers, and some light industrial applications.

Quality Specification Report

Product : Ceramic Tiles Group Bla, Eb \leq 0.5%
 Product Code : MT 4SR1-SD-0110 (NET/PACK 25) (AUS) PM

Characteristics	Specification ISO 13006		Specification TCC	Test Methods
1. Width & Length: the deviation, in percent, of the average size for each tile (two or four sides) from the work size, Sw	-	± 0.9 mm	97.0 \pm 0.9 mm	ISO 10545-2
2. Thickness, the deviation, in percent, of the average thickness of each tile from the work size, thickness	-	± 0.5 mm	6.0 \pm 0.5 mm	
3. Water Absorption, percent mass fraction	Eb \leq 0.5 %		Eb \leq 0.5 %	ISO 10545-3
4. Modulus Of Rupture, N/mm ²	Minimum 35		Minimum 35	ISO 10545-4
5. Breaking Strength (N) Thickness < 7.5 mm	Not less than 700		Not less than 700	ISO 10545-4
6. Resistance to Surface Abrasion of Glazed Tiles	State Classification		Minimum Class 2: 600 cycle	ISO 10545-7
7. Craze Resistance	Required		Resisted	ISO 10545-11
8. Frost Resistance	Required		Resisted	ISO 10545-12
9. Slipperiness, R-Test	State Classification		R-10	AS/NZS 4586; Appendix D
10. Resistance to Staining				ISO 10545-14
a) Stains leaving a trace (pastes)	Minimum Class 3		Minimum Class 3	
b) Stains having chemical/ oxidizing action	Minimum Class 3		Minimum Class 3	
c) Stains, forming a film	Minimum Class 3		Minimum Class 3	
11. Resistance to Chemicals				ISO 10545-13
a) Resistance to low concentrations of acids, glazed tiles	State Classification		Minimum Class GLB	
b) Resistance to low concentrations of alkalis, glazed tiles	State Classification		Minimum Class GLB	
c) Resistance to household chemicals, glazed tiles	Minimum class GB		Minimum Class GB	
d) Resistance to swimming pool salts, glazed tiles	Minimum class GB		Minimum Class GB	

Approved by : Monthathip Pongsiri
 Technical Office Manager
 Date : 22-08-2017

Quality Specification Report

Product : Ceramic Tiles Group Bla, Eb \leq 0.5%
 Product Code : MT 4SR1-SD-0787 (NET/PACK 25) (AUS) PM

Characteristics	Specification ISO 13006		Specification TCC	Test Methods
1. Width & Length: the deviation, in percent, of the average size for each tile (two or four sides) from the work size, Sw	-	± 0.9 mm	97.0 \pm 0.9 mm	ISO 10545-2
2. Thickness, the deviation, in percent, of the average thickness of each tile from the work size, thickness	-	± 0.5 mm	6.0 \pm 0.5 mm	
3. Water Absorption, percent mass fraction	Eb \leq 0.5 %		Eb \leq 0.5 %	ISO 10545-3
4. Modulus Of Rupture, N/mm ²	Minimum 35		Minimum 35	ISO 10545-4
5. Breaking Strength (N) Thickness < 7.5 mm	Not less than 700		Not less than 700	ISO 10545-4
6. Resistance to Surface Abrasion of Glazed Tiles	State Classification		Minimum Class 2: 600 cycle	ISO 10545-7
7. Craze Resistance	Required		Resisted	ISO 10545-11
8. Frost Resistance	Required		Resisted	ISO 10545-12
9. Slipperiness, R-Test	State Classification		R-10	AS/NZS 4586; Appendix D
10. Resistance to Staining				ISO 10545-14
a) Stains leaving a trace (pastes)	Minimum Class 3		Minimum Class 3	
b) Stains having chemical/ oxidizing action	Minimum Class 3		Minimum Class 3	
c) Stains, forming a film	Minimum Class 3		Minimum Class 3	
11. Resistance to Chemicals				ISO 10545-13
a) Resistance to low concentrations of acids, glazed tiles	State Classification		Minimum Class GLB	
b) Resistance to low concentrations of alkalis, glazed tiles	State Classification		Minimum Class GLB	
c) Resistance to household chemicals, glazed tiles	Minimum class GB		Minimum Class GB	
d) Resistance to swimming pool salts, glazed tiles	Minimum class GB		Minimum Class GB	

Approved by : Monthathip Pongsiri
 Technical Office Manager
 Date : 22-08-2017

Quality Specification Report

Product : Ceramic Tiles Group Bla, Eb \leq 0.5%
 Product Code : MT 4SR1-SD-0541 (NET/PACK 25) PM

Characteristics	Specification ISO 13006		Specification TCC	Test Methods
1. Width & Length: the deviation, in percent, of the average size for each tile (two or four sides) from the work size, Sw	-	± 0.9 mm	97.0 \pm 0.9 mm	ISO 10545-2
2. Thickness, the deviation, in percent, of the average thickness of each tile from the work size, thickness	-	± 0.5 mm	6.0 \pm 0.5 mm	
3. Water Absorption, percent mass fraction	Eb \leq 0.5 %		Eb \leq 0.5 %	ISO 10545-3
4. Modulus Of Rupture, N/mm ²	Minimum 35		Minimum 35	ISO 10545-4
5. Breaking Strength (N) Thickness < 7.5 mm	Not less than 700		Not less than 700	ISO 10545-4
6. Resistance to Surface Abrasion of Glazed Tiles	State Classification		Minimum Class 2: 600 cycle	ISO 10545-7
7. Craze Resistance	Required		Resisted	ISO 10545-11
8. Frost Resistance	Required		Resisted	ISO 10545-12
9. Slipperiness, R-Test	State Classification		R-10	AS/NZS 4586; Appendix D
10. Resistance to Staining				ISO 10545-14
a) Stains leaving a trace (pastes)	Minimum Class 3		Minimum Class 3	
b) Stains having chemical/ oxidizing action	Minimum Class 3		Minimum Class 3	
c) Stains, forming a film	Minimum Class 3		Minimum Class 3	
11. Resistance to Chemicals				ISO 10545-13
a) Resistance to low concentrations of acids, glazed tiles	State Classification		Minimum Class GLB	
b) Resistance to low concentrations of alkalis, glazed tiles	State Classification		Minimum Class GLB	
c) Resistance to household chemicals, glazed tiles	Minimum class GB		Minimum Class GB	
d) Resistance to swimming pool salts, glazed tiles	Minimum class GB		Minimum Class GB	

Approved by : Monthathip Pongsiri
 Technical Office Manager
 Date : 22-08-2017

Quality Specification Report

Product : Ceramic Tiles Group Bla, Eb \leq 0.5%
 Product Code : MT 4SR1-SD-0786 (NET/PACK 25) PM

Characteristics	Specification ISO 13006		Specification TCC	Test Methods
1. Width & Length: the deviation, in percent, of the average size for each tile (two or four sides) from the work size, Sw	-	± 0.9 mm	97.0 \pm 0.9 mm	ISO 10545-2
2. Thickness, the deviation, in percent, of the average thickness of each tile from the work size, thickness	-	± 0.5 mm	6.0 \pm 0.5 mm	
3. Water Absorption, percent mass fraction	Eb \leq 0.5 %		Eb \leq 0.5 %	ISO 10545-3
4. Modulus Of Rupture, N/mm ²	Minimum 35		Minimum 35	ISO 10545-4
5. Breaking Strength (N) Thickness < 7.5 mm	Not less than 700		Not less than 700	ISO 10545-4
6. Resistance to Surface Abrasion of Glazed Tiles	State Classification		Minimum Class 2: 600 cycle	ISO 10545-7
7. Craze Resistance	Required		Resisted	ISO 10545-11
8. Frost Resistance	Required		Resisted	ISO 10545-12
9. Slipperiness, R-Test	State Classification		R-10	AS/NZS 4586; Appendix D
10. Resistance to Staining				ISO 10545-14
a) Stains leaving a trace (pastes)	Minimum Class 3		Minimum Class 3	
b) Stains having chemical/ oxidizing action	Minimum Class 3		Minimum Class 3	
c) Stains, forming a film	Minimum Class 3		Minimum Class 3	
11. Resistance to Chemicals				ISO 10545-13
a) Resistance to low concentrations of acids, glazed tiles	State Classification		Minimum Class GLB	
b) Resistance to low concentrations of alkalis, glazed tiles	State Classification		Minimum Class GLB	
c) Resistance to household chemicals, glazed tiles	Minimum class GB		Minimum Class GB	
d) Resistance to swimming pool salts, glazed tiles	Minimum class GB		Minimum Class GB	

Approved by : Monthathip Pongsiri
 Technical Office Manager
 Date : 22-08-2017

Quality Specification Report

Product : Ceramic Tiles Group Bla, Eb \leq 0.5%
 Product Code : MT 4SR1-SD-0771 (NET/PACK 25) PM

Characteristics	Specification ISO 13006		Specification TCC	Test Methods
1. Width & Length: the deviation, in percent, of the average size for each tile (two or four sides) from the work size, Sw	-	± 0.9 mm	97.0 \pm 0.9 mm	ISO 10545-2
2. Thickness, the deviation, in percent, of the average thickness of each tile from the work size, thickness	-	± 0.5 mm	6.0 \pm 0.5 mm	
3. Water Absorption, percent mass fraction	Eb \leq 0.5 %		Eb \leq 0.5 %	ISO 10545-3
4. Modulus Of Rupture, N/mm ²	Minimum 35		Minimum 35	ISO 10545-4
5. Breaking Strength (N) Thickness < 7.5 mm	Not less than 700		Not less than 700	ISO 10545-4
6. Resistance to Surface Abrasion of Glazed Tiles	State Classification		Minimum Class 2: 600 cycle	ISO 10545-7
7. Crazeing Resistance	Required		Resisted	ISO 10545-11
8. Frost Resistance	Required		Resisted	ISO 10545-12
9. Slipperiness, R-Test	State Classification		R-10	AS/NZS 4586; Appendix D
10. Resistance to Staining				ISO 10545-14
a) Stains leaving a trace (pastes)	Minimum Class 3		Minimum Class 3	
b) Stains having chemical/ oxidizing action	Minimum Class 3		Minimum Class 3	
c) Stains, forming a film	Minimum Class 3		Minimum Class 3	
11. Resistance to Chemicals				ISO 10545-13
a) Resistance to low concentrations of acids , glazed tiles	State Classification		Minimum Class GLB	
b) Resistance to low concentrations of alkalis, glazed tiles	State Classification		Minimum Class GLB	
c) Resistance to household chemicals, glazed tiles	Minimum class GB		Minimum Class GB	
d) Resistance to swimming pool salts, glazed tiles	Minimum class GB		Minimum Class GB	

Approved by : Monthathip Pongsiri
 Technical Office Manager
 Date : 22-08-2017

Quality Specification Report

Product : Ceramic Tiles Group Bla, Eb \leq 0.5%
 Product Code : MT 4SR1-SD-0707 (NET/PACK 25) (AUS) PM

Characteristics	Specification ISO 13006		Specification TCC	Test Methods
1. Width & Length: the deviation, in percent, of the average size for each tile (two or four sides) from the work size, Sw	-	± 0.9 mm	97.0 \pm 0.9 mm	ISO 10545-2
2. Thickness, the deviation, in percent, of the average thickness of each tile from the work size, thickness	-	± 0.5 mm	6.0 \pm 0.5 mm	
3. Water Absorption, percent mass fraction	Eb \leq 0.5 %		Eb \leq 0.5 %	ISO 10545-3
4. Modulus Of Rupture, N/mm ²	Minimum 35		Minimum 35	ISO 10545-4
5. Breaking Strength (N) Thickness < 7.5 mm	Not less than 700		Not less than 700	ISO 10545-4
6. Resistance to Surface Abrasion of Glazed Tiles	State Classification		Minimum Class 2: 600 cycle	ISO 10545-7
7. Craze Resistance	Required		Resisted	ISO 10545-11
8. Frost Resistance	Required		Resisted	ISO 10545-12
9. Slipperiness, R-Test	State Classification		R-10	AS/NZS 4586; Appendix D
10. Resistance to Staining				ISO 10545-14
a) Stains leaving a trace (pastes)	Minimum Class 3		Minimum Class 3	
b) Stains having chemical/ oxidizing action	Minimum Class 3		Minimum Class 3	
c) Stains, forming a film	Minimum Class 3		Minimum Class 3	
11. Resistance to Chemicals				ISO 10545-13
a) Resistance to low concentrations of acids, glazed tiles	State Classification		Minimum Class GLB	
b) Resistance to low concentrations of alkalis, glazed tiles	State Classification		Minimum Class GLB	
c) Resistance to household chemicals, glazed tiles	Minimum class GB		Minimum Class GB	
d) Resistance to swimming pool salts, glazed tiles	Minimum class GB		Minimum Class GB	

Approved by : Monthathip Pongsiri
 Technical Office Manager
 Date : 22-08-2017

Quality Specification Report

Product : Ceramic Tiles Group Bla, Eb \leq 0.5%
 Product Code : MT 4SR1-SD-0706 (NET/PACK 25) PM

Characteristics	Specification ISO 13006		Specification TCC	Test Methods
1. Width & Length: the deviation, in percent, of the average size for each tile (two or four sides) from the work size, Sw	-	± 0.9 mm	97.0 \pm 0.9 mm	ISO 10545-2
2. Thickness, the deviation, in percent, of the average thickness of each tile from the work size, thickness	-	± 0.5 mm	6.0 \pm 0.5 mm	
3. Water Absorption, percent mass fraction	Eb \leq 0.5 %		Eb \leq 0.5 %	ISO 10545-3
4. Modulus Of Rupture, N/mm ²	Minimum 35		Minimum 35	ISO 10545-4
5. Breaking Strength (N) Thickness < 7.5 mm	Not less than 700		Not less than 700	ISO 10545-4
6. Resistance to Surface Abrasion of Glazed Tiles	State Classification		Minimum Class 2: 600 cycle	ISO 10545-7
7. Craze Resistance	Required		Resisted	ISO 10545-11
8. Frost Resistance	Required		Resisted	ISO 10545-12
9. Slipperiness, R-Test	State Classification		R-10	AS/NZS 4586; Appendix D
10. Resistance to Staining				ISO 10545-14
a) Stains leaving a trace (pastes)	Minimum Class 3		Minimum Class 3	
b) Stains having chemical/ oxidizing action	Minimum Class 3		Minimum Class 3	
c) Stains, forming a film	Minimum Class 3		Minimum Class 3	
11. Resistance to Chemicals				ISO 10545-13
a) Resistance to low concentrations of acids, glazed tiles	State Classification		Minimum Class GLB	
b) Resistance to low concentrations of alkalis, glazed tiles	State Classification		Minimum Class GLB	
c) Resistance to household chemicals, glazed tiles	Minimum class GB		Minimum Class GB	
d) Resistance to swimming pool salts, glazed tiles	Minimum class GB		Minimum Class GB	

Approved by : Monthathip Pongsiri
 Technical Office Manager
 Date : 22-08-2017

Quality Specification Report

Product : Ceramic Tiles Group Bla, Eb \leq 0.5%
 Product Code : MT 4SR1-SD-0651 (NET/PACK 25) (AUS) PM

Characteristics	Specification ISO 13006		Specification TCC	Test Methods
1. Width & Length: the deviation, in percent, of the average size for each tile (two or four sides) from the work size, Sw	-	± 0.9 mm	97.0 \pm 0.9 mm	ISO 10545-2
2. Thickness, the deviation, in percent, of the average thickness of each tile from the work size, thickness	-	± 0.5 mm	6.0 \pm 0.5 mm	
3. Water Absorption, percent mass fraction	Eb \leq 0.5 %		Eb \leq 0.5 %	ISO 10545-3
4. Modulus Of Rupture, N/mm ²	Minimum 35		Minimum 35	ISO 10545-4
5. Breaking Strength (N) Thickness < 7.5 mm	Not less than 700		Not less than 700	ISO 10545-4
6. Resistance to Surface Abrasion of Glazed Tiles	State Classification		Minimum Class 2: 600 cycle	ISO 10545-7
7. Craze Resistance	Required		Resisted	ISO 10545-11
8. Frost Resistance	Required		Resisted	ISO 10545-12
9. Slipperiness, R-Test	State Classification		R-10	AS/NZS 4586; Appendix D
10. Resistance to Staining				ISO 10545-14
a) Stains leaving a trace (pastes)	Minimum Class 3		Minimum Class 3	
b) Stains having chemical/ oxidizing action	Minimum Class 3		Minimum Class 3	
c) Stains, forming a film	Minimum Class 3		Minimum Class 3	
11. Resistance to Chemicals				ISO 10545-13
a) Resistance to low concentrations of acids, glazed tiles	State Classification		Minimum Class GLB	
b) Resistance to low concentrations of alkalis, glazed tiles	State Classification		Minimum Class GLB	
c) Resistance to household chemicals, glazed tiles	Minimum class GB		Minimum Class GB	
d) Resistance to swimming pool salts, glazed tiles	Minimum class GB		Minimum Class GB	

Approved by : Monthathip Pongsiri
 Technical Office Manager
 Date : 22-08-2017

Quality Specification Report

Product : Ceramic Tiles Group Bla, Eb \leq 0.5%
 Product Code : MT 4SR1-SD-0640 (NET/PACK 25) PM

Characteristics	Specification ISO 13006		Specification TCC	Test Methods
1. Width & Length: the deviation, in percent, of the average size for each tile (two or four sides) from the work size, Sw	-	± 0.9 mm	97.0 \pm 0.9 mm	ISO 10545-2
2. Thickness, the deviation, in percent, of the average thickness of each tile from the work size, thickness	-	± 0.5 mm	6.0 \pm 0.5 mm	
3. Water Absorption, percent mass fraction	Eb \leq 0.5 %		Eb \leq 0.5 %	ISO 10545-3
4. Modulus Of Rupture, N/mm ²	Minimum 35		Minimum 35	ISO 10545-4
5. Breaking Strength (N) Thickness < 7.5 mm	Not less than 700		Not less than 700	ISO 10545-4
6. Resistance to Surface Abrasion of Glazed Tiles	State Classification		Minimum Class 2: 600 cycle	ISO 10545-7
7. Craze Resistance	Required		Resisted	ISO 10545-11
8. Frost Resistance	Required		Resisted	ISO 10545-12
9. Slipperiness, R-Test	State Classification		R-10	AS/NZS 4586; Appendix D
10. Resistance to Staining				ISO 10545-14
a) Stains leaving a trace (pastes)	Minimum Class 3		Minimum Class 3	
b) Stains having chemical/ oxidizing action	Minimum Class 3		Minimum Class 3	
c) Stains, forming a film	Minimum Class 3		Minimum Class 3	
11. Resistance to Chemicals				ISO 10545-13
a) Resistance to low concentrations of acids, glazed tiles	State Classification		Minimum Class GLB	
b) Resistance to low concentrations of alkalis, glazed tiles	State Classification		Minimum Class GLB	
c) Resistance to household chemicals, glazed tiles	Minimum class GB		Minimum Class GB	
d) Resistance to swimming pool salts, glazed tiles	Minimum class GB		Minimum Class GB	

Approved by : Monthathip Pongsiri
 Technical Office Manager
 Date : 22-08-2017

Quality Specification Report

Product : Ceramic Tiles Group Bla, Eb \leq 0.5%
 Product Code : MT 4SR1-SD-0708 (NET/PACK 25) (AUS) PM

Characteristics	Specification ISO 13006		Specification TCC	Test Methods
1. Width & Length: the deviation, in percent, of the average size for each tile (two or four sides) from the work size, Sw	-	± 0.9 mm	97.0 \pm 0.9 mm	ISO 10545-2
2. Thickness, the deviation, in percent, of the average thickness of each tile from the work size, thickness	-	± 0.5 mm	6.0 \pm 0.5 mm	
3. Water Absorption, percent mass fraction	Eb \leq 0.5 %		Eb \leq 0.5 %	ISO 10545-3
4. Modulus Of Rupture, N/mm ²	Minimum 35		Minimum 35	ISO 10545-4
5. Breaking Strength (N) Thickness < 7.5 mm	Not less than 700		Not less than 700	ISO 10545-4
6. Resistance to Surface Abrasion of Glazed Tiles	State Classification		Minimum Class 2: 600 cycle	ISO 10545-7
7. Craze Resistance	Required		Resisted	ISO 10545-11
8. Frost Resistance	Required		Resisted	ISO 10545-12
9. Slipperiness, R-Test	State Classification		R-10	AS/NZS 4586; Appendix D
10. Resistance to Staining				ISO 10545-14
a) Stains leaving a trace (pastes)	Minimum Class 3		Minimum Class 3	
b) Stains having chemical/ oxidizing action	Minimum Class 3		Minimum Class 3	
c) Stains, forming a film	Minimum Class 3		Minimum Class 3	
11. Resistance to Chemicals				ISO 10545-13
a) Resistance to low concentrations of acids, glazed tiles	State Classification		Minimum Class GLB	
b) Resistance to low concentrations of alkalis, glazed tiles	State Classification		Minimum Class GLB	
c) Resistance to household chemicals, glazed tiles	Minimum class GB		Minimum Class GB	
d) Resistance to swimming pool salts, glazed tiles	Minimum class GB		Minimum Class GB	

Approved by : Monthathip Pongsiri
 Technical Office Manager
 Date : 22-08-2017

Quality Specification Report

Product : Ceramic Tiles Group Bla, Eb \leq 0.5%
 Product Code : MT 4SR1-SD-0335 (NET/PACK 25) PM

Characteristics	Specification ISO 13006		Specification TCC	Test Methods
1. Width & Length: the deviation, in percent, of the average size for each tile (two or four sides) from the work size, Sw	-	± 0.9 mm	97.0 \pm 0.9 mm	ISO 10545-2
2. Thickness, the deviation, in percent, of the average thickness of each tile from the work size, thickness	-	± 0.5 mm	6.0 \pm 0.5 mm	
3. Water Absorption, percent mass fraction	Eb \leq 0.5 %		Eb \leq 0.5 %	ISO 10545-3
4. Modulus Of Rupture, N/mm ²	Minimum 35		Minimum 35	ISO 10545-4
5. Breaking Strength (N) Thickness < 7.5 mm	Not less than 700		Not less than 700	ISO 10545-4
6. Resistance to Surface Abrasion of Glazed Tiles	State Classification		Minimum Class 2: 600 cycle	ISO 10545-7
7. Craze Resistance	Required		Resisted	ISO 10545-11
8. Frost Resistance	Required		Resisted	ISO 10545-12
9. Slipperiness, R-Test	State Classification		R-10	AS/NZS 4586; Appendix D
10. Resistance to Staining				ISO 10545-14
a) Stains leaving a trace (pastes)	Minimum Class 3		Minimum Class 3	
b) Stains having chemical/ oxidizing action	Minimum Class 3		Minimum Class 3	
c) Stains, forming a film	Minimum Class 3		Minimum Class 3	ISO 10545-13
11. Resistance to Chemicals				
a) Resistance to low concentrations of acids, glazed tiles	State Classification		Minimum Class GLB	
b) Resistance to low concentrations of alkalis, glazed tiles	State Classification		Minimum Class GLB	
c) Resistance to household chemicals, glazed tiles	Minimum class GB		Minimum Class GB	
d) Resistance to swimming pool salts, glazed tiles	Minimum class GB		Minimum Class GB	

Approved by : Monthathip Pongsiri
 Technical Office Manager
 Date : 22-08-2017